

## **Appendix B – South Additional Information**

Direct Energy Regulated Services  
January 2010 GCFR

# November Data

Figure 1 – Daily Price Data

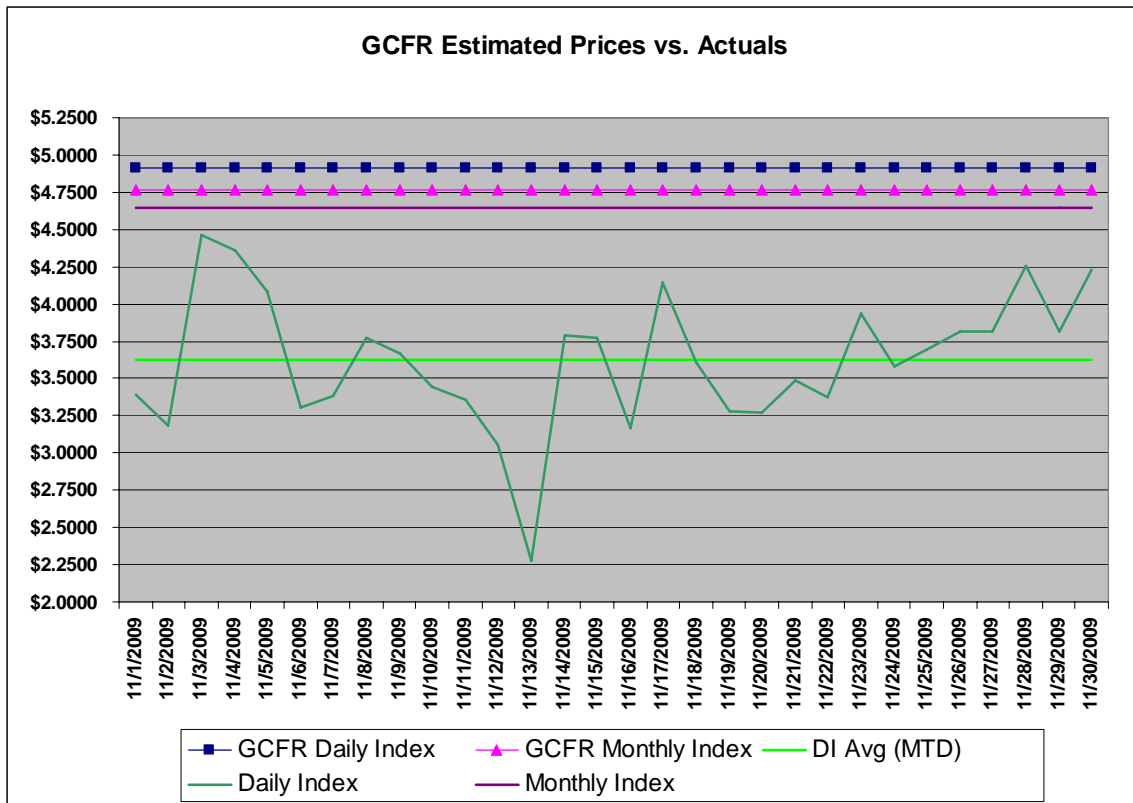


Table 1 – Price Comparison (November

	November GCFR	Actual	Difference
MI	\$4.7624	\$4.6408	(\$0.122)
DI Average	\$4.9120	\$3.6262	(\$1.286)

Figure 1 shows the difference in the actual daily and monthly index prices and the forecast daily and monthly prices that were included in the November GCFR. Figure 2 below shows the actual temperature during the month of November for Calgary.

Figure 2 – Daily Weather Data (Calgary)

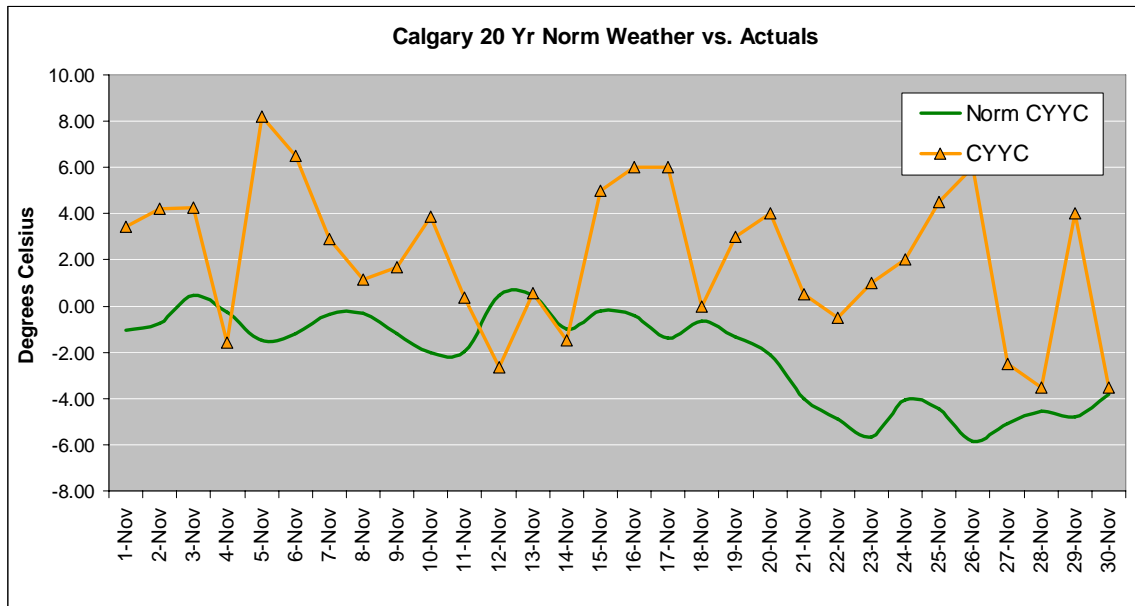


Figure 3 – South Supply Purchases (TJ)

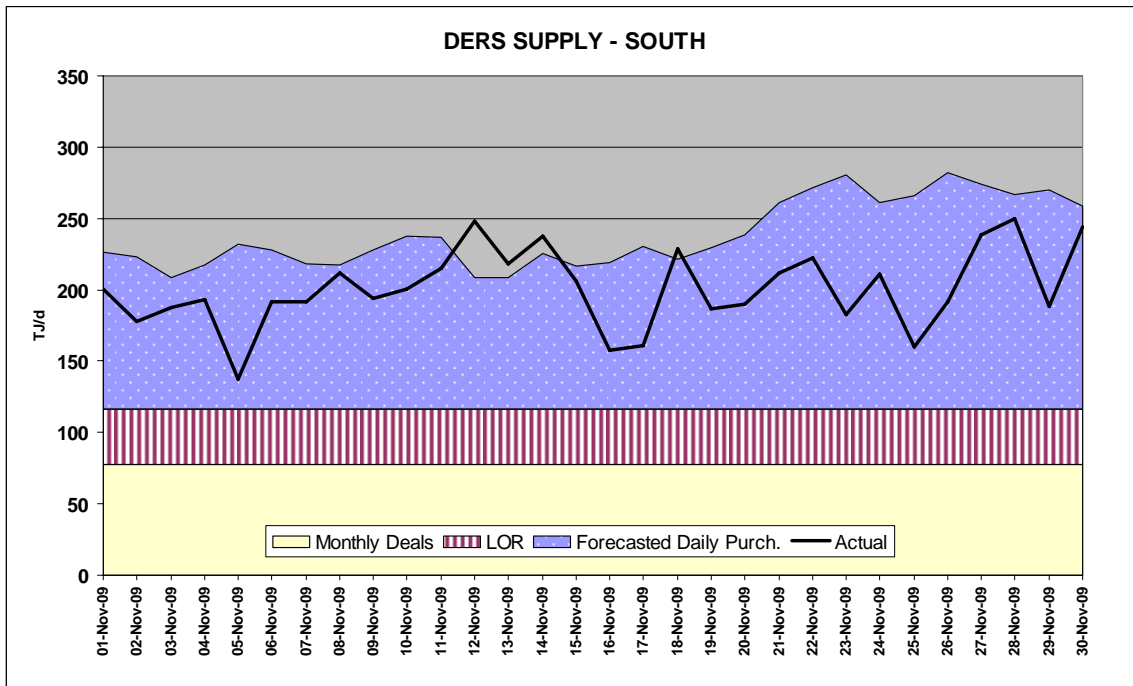
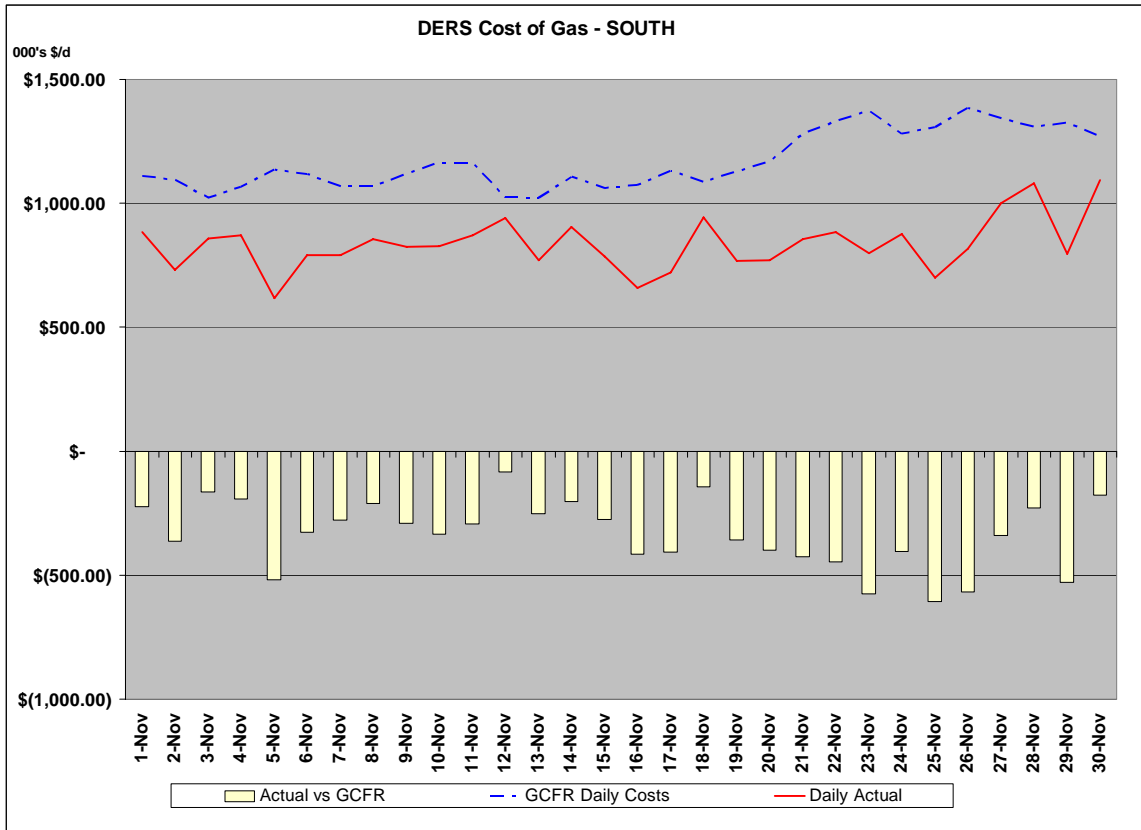


Table 2 – November Supply Purchases (TJ)

November Totals (TJ)		Schedule Reference
Monthly	2,340	
Life of Reserve	1,161	
20 yr normal	3,761	
Actual	(1,226)	
Total (January GCFR)	6,036	January GCFR (M-2 column B (Line 1 minus Line 5))
November GCFR	7,262	November GCFR (M-2 column D (Line 1))
Difference	(1,226)	January GCFR line minus November GCFR line

Figure 4 – South Purchases (\$'000)



Please note that the estimated actuals for the current month is a "net" estimate. This number is the sum of current month purchases minus excess system sales.

Table 3 – November Purchases (\$'000)

November Purchases Total (\$'000)		Schedule References
November GCFR Forecast	\$35,116	November GCFR (M-1 Column E (line 2 minus line 13))
January GCFR Forecast	\$25,194	January GCFR (M-1 Column C (line 2 minus line 13))
Difference	(\$9,922)	January GCFR line minus November GCFR line

South Calendar Sales (\$'000)

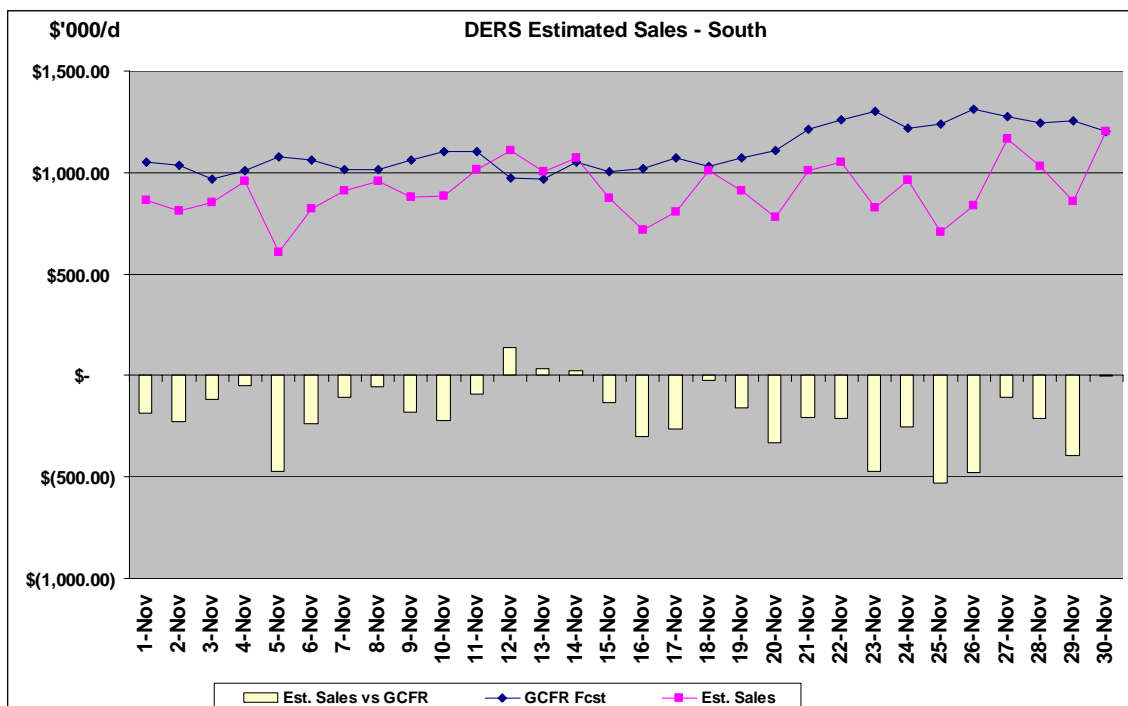


Table 4 – November Sales (\$'000)

November Sales Total (\$'000)		Schedule References
November GCFR Forecast	\$33,166	November GCFR (M-1 Column E (line 12))
January GCFR Forecast	\$27,499	January GCFR (M-1 Column C (line 12))
Difference	\$5,667	January GCFR line minus November GCFR line

The chart below shows the cost of gas and calendar sales for the month of November as reported in the November and January GCFR.

Table 5 – Variance in November and January GCFR for November Calendar Month Purchases and Sales (\$'000)

	November GCFR	January GCFR	Table References
November Sales	\$33,166	\$27,499	Table 4
November Purchases	\$35,116	\$25,194	Table 3
Difference	(\$1,950)	\$2,305	Sales minus Purchases

Note: The data shown in Figures 1 through 4 have been taken as of December 21<sup>st</sup> and represents information available to DERS at the time. Numbers may be slightly off as a result of rounding differences.

## December Data

Figure 6 – Daily Price Data

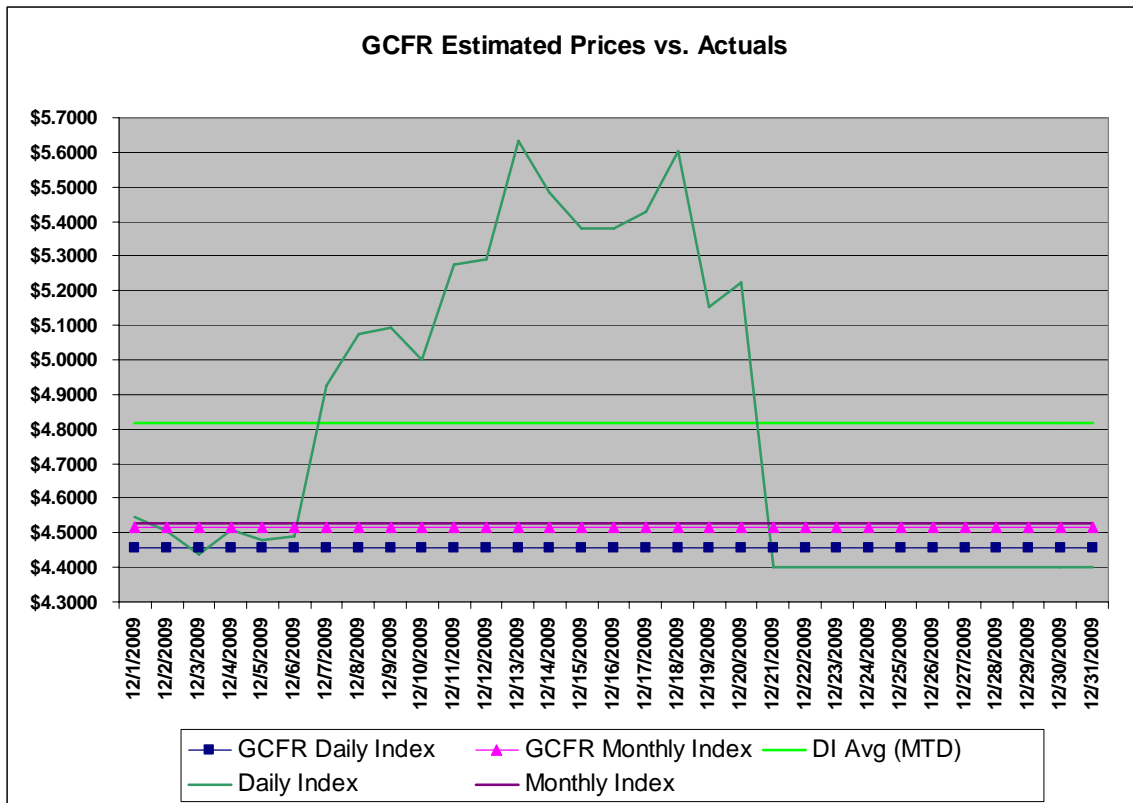


Table 6 – Price Comparison (December)

	December GCFR	Actual	Difference
MI	\$4.5146	\$4.5276	\$0.013
DI Average	\$4.4570	\$4.8165	\$0.359

Figure 6 shows the difference in the actual daily and monthly index prices and the forecast daily and monthly prices that were included in the December GCFR. Figure 7 below shows the actual temperature during the month of December for Calgary.

Figure 7 – Daily Weather Data Calgary

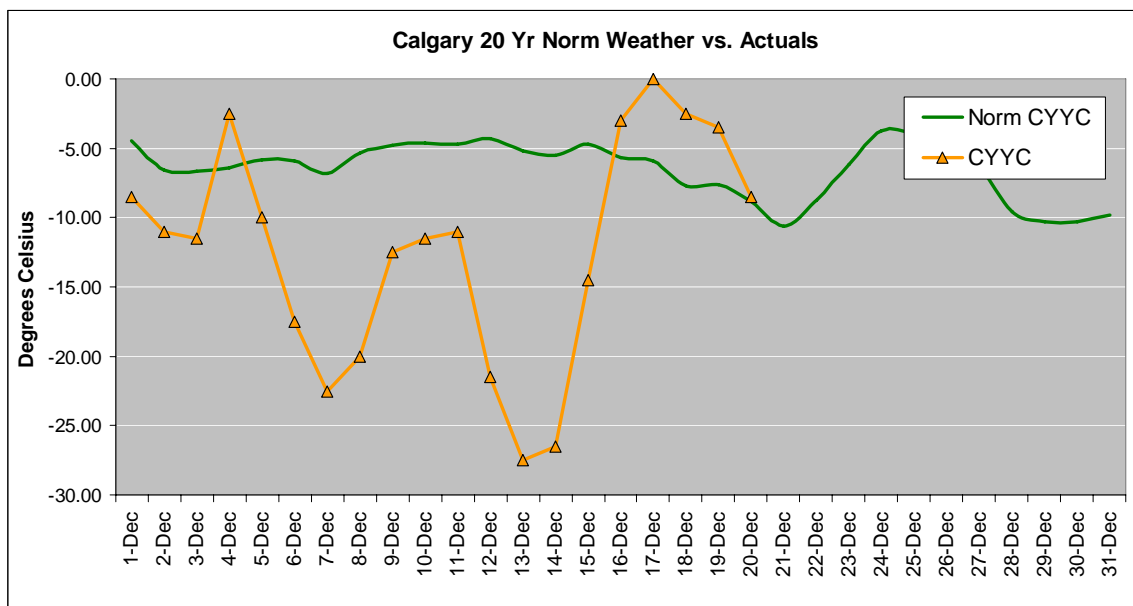


Figure 8 – South Supply Purchases (TJ)

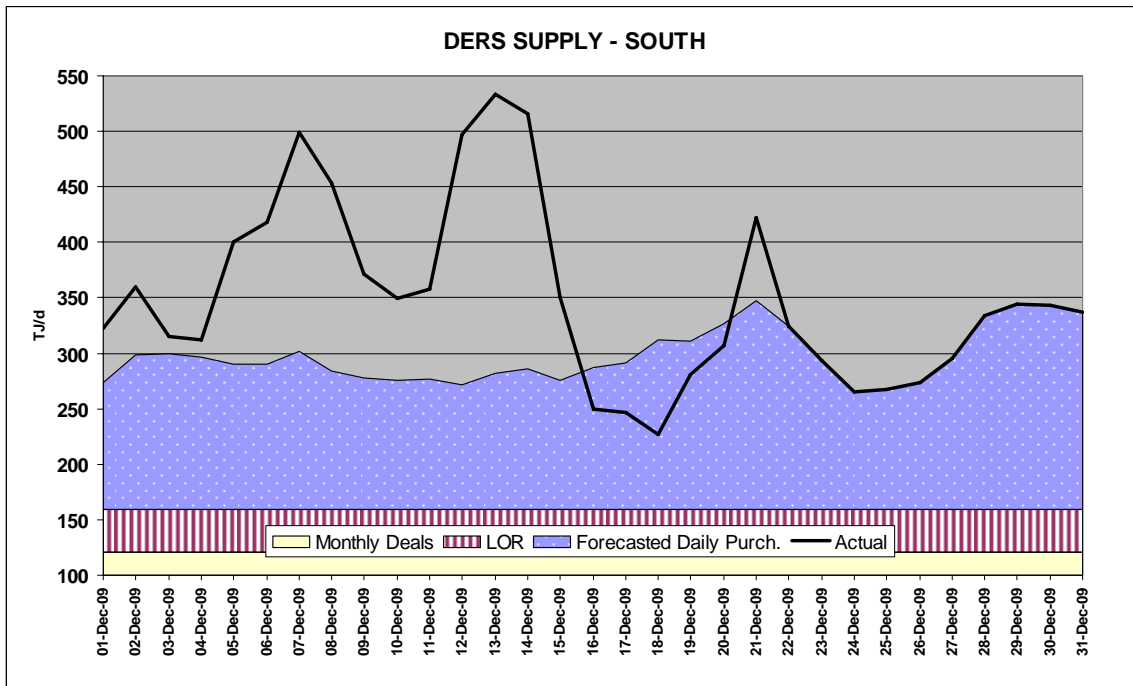
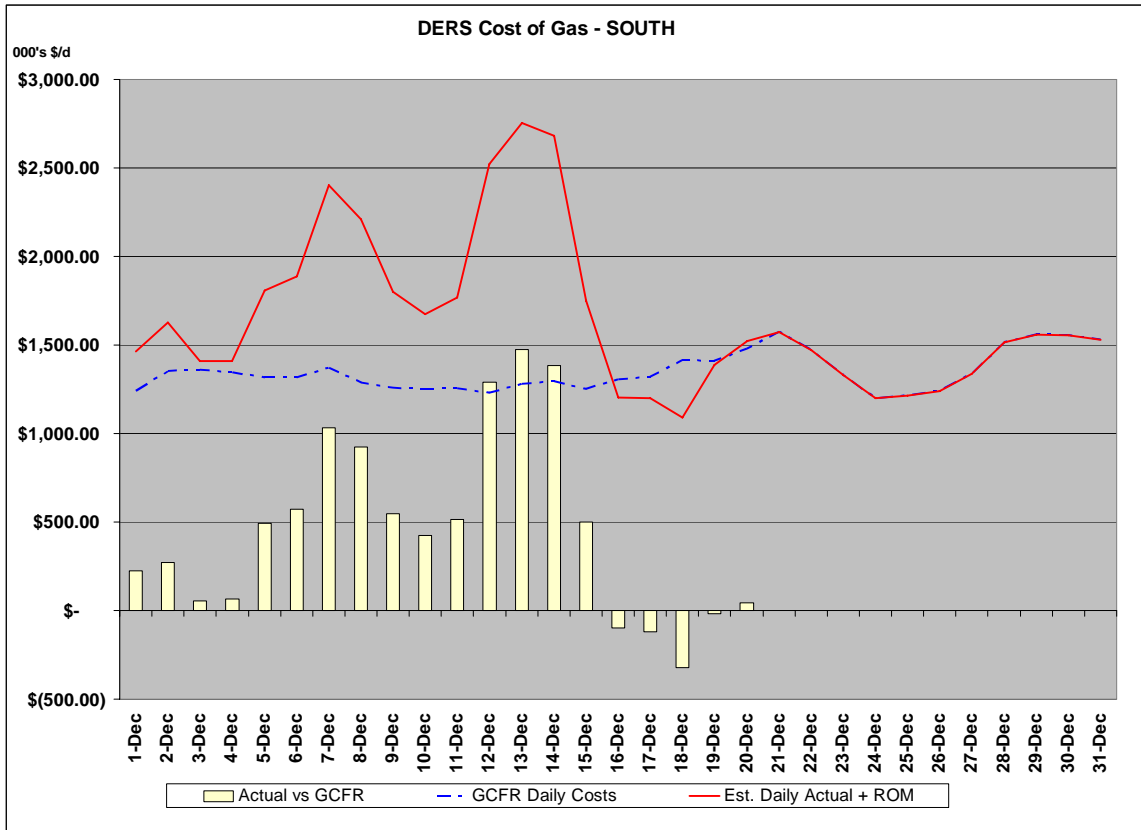


Table 7 – December Supply Purchases (TJ)

Totals (TJ)		Schedule Reference
Monthly	3,751	
Life of Reserve	1,200	
20 yr normal	4,369	
Actual	1,616	
Total (January GCFR)	10,936	January GCFR(M-2 column C (Line 1 minus Line 5))
December GCFR	9,320	December GCFR (M-2 column D (line 1))
Difference	1,616	January GCFR line minus December GCFR line

Figure 9 – South Purchases (\$'000)



Please note that the estimated actuals for the current month is a "net" estimate. This number is the sum of current month purchases excess system sales.

Table 8 – December Purchases (\$'000)

Purchases Total (\$'000)		Schedule References
December GCFR Forecast	\$41,825	December GCFR (M-1 Column E (line 2 minus line 13))
January GCFR Forecast	\$53,593	January GCFR (M-1 Column D (line 2 minus line 13))
Difference	\$11,768	January GCFR line minus December GCFR line

Figure 10 - South Calendar Sales (\$'000)

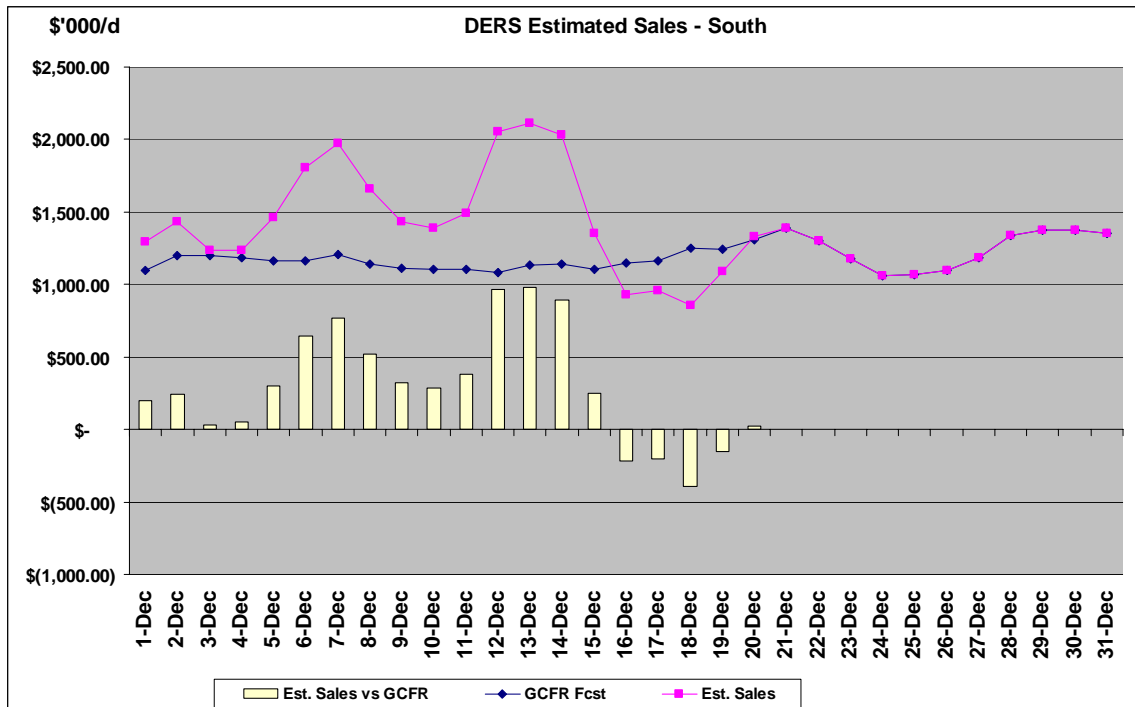


Table 9 – December Sales (\$'000)

Sales Total (\$'000)		Schedule References
December GCFR Forecast	\$36,767	December GCFR (M-1 Column E (line 12))
January GCFR Forecast	\$31,444	January GCFR (M-1 Column D (line 12))
Difference	(\$5,323)	January GCFR line minus December GCFR line

The chart below shows the cost of gas and calendar sales for the month of December as reported in the December and January GCFR.

Table 10 – Variance in the December and January GCFR for December Calendar Month Purchases and Sales (\$'000)

	December GCFR	January GCFR	Table References
Sales	\$36,767	\$43,230	Table 9
Purchases	\$41,825	\$53,593	Table 8
Difference	(\$5,058)	(\$10,363)	Sales minus Purchases

Note: The data shown in Figures 6 through 9 have been taken as of December 21<sup>st</sup>, and represents information available to DERS at the time. Numbers may be slightly off as a result of rounding differences.

Prior Period Adjustments

Sales (Schedule M-1 line 12)

DERS has included a credit of \$191,561 as a prior period adjustment relating to calendar sales. This prior period adjustment relates to billing adjustments (cancel/re-bills) for customer billings from January 2008 to September 2009 consumption period. Billing adjustments take the form of initial charges, revised charges and the time period in which the adjustment relates to as part of regular monthly reporting. The dollars and volumes for this adjustment are detailed by month below.

	<b>South</b>	
	<b>\$</b>	<b>GJs</b>
<b>Prior to Jan-09</b>	\$ (7,433.02)	(970.05)
Jan-09	\$ 11,155.06	2,005.69
Feb-09	\$ 20,333.99	3,726.42
Mar-09	\$ 58,789.64	13,053.63
Apr-09	\$ 27,657.45	7,784.88
May-09	\$ 15,248.50	5,018.14
Jun-09	\$ 28,377.19	8,062.35
Jul-09	\$ 8,484.74	5,816.68
Aug-09	\$ 10,555.72	3,353.42
Sep-09	\$ 18,391.59	7,874.05
<b>Total</b>	<b>\$ 191,560.86</b>	<b>55,725.21</b>