

Appendix B – North Additional Information

Direct Energy Regulated Services
February 2008 GCFR

December Data

Figure 1 – Daily Price Data

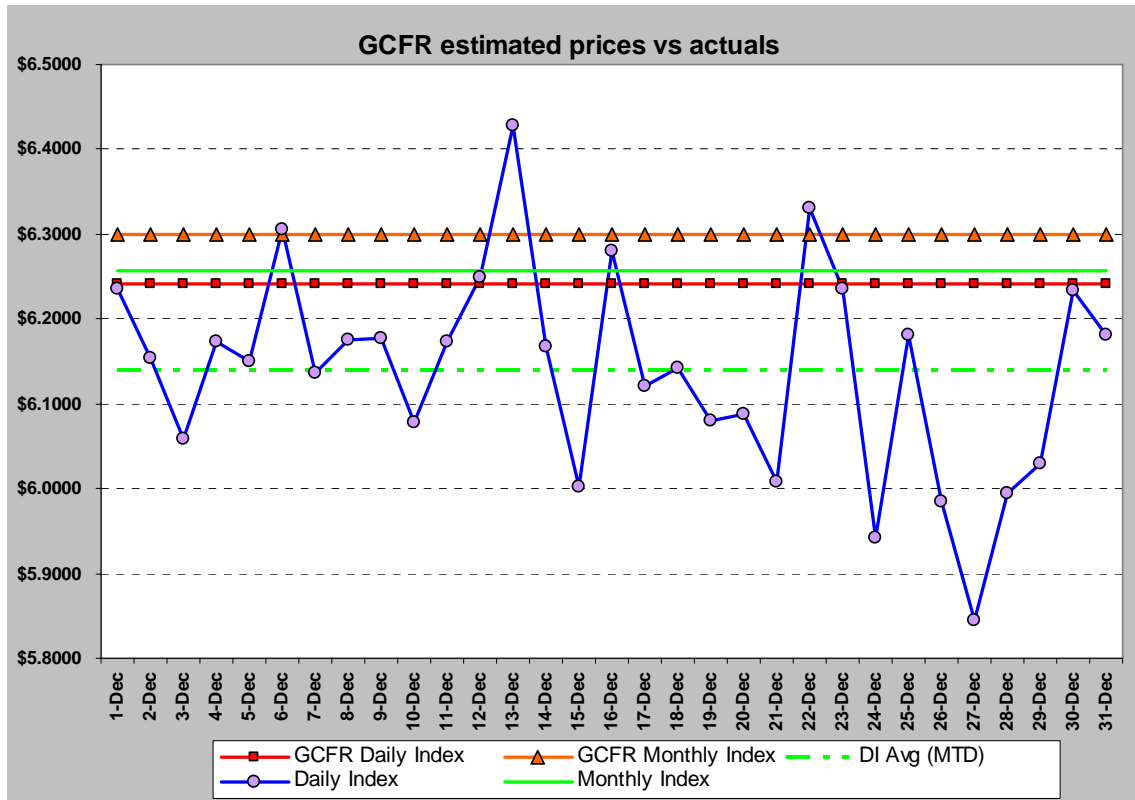


Table 1 – Price Comparison (December)

	December GCFR	Actual	Difference
MI	\$6.2993	\$5.8228	\$0.4765
DI Average	\$6.2410	\$5.7241	\$0.5169

Figure 1 shows the difference in the actual daily and monthly index prices and the forecast daily and monthly prices that were included in the December GCFR. Figure 2 below shows the actual temperature during the month of December for Edmonton.

Figure 2 – Daily Weather Data (Edmonton)

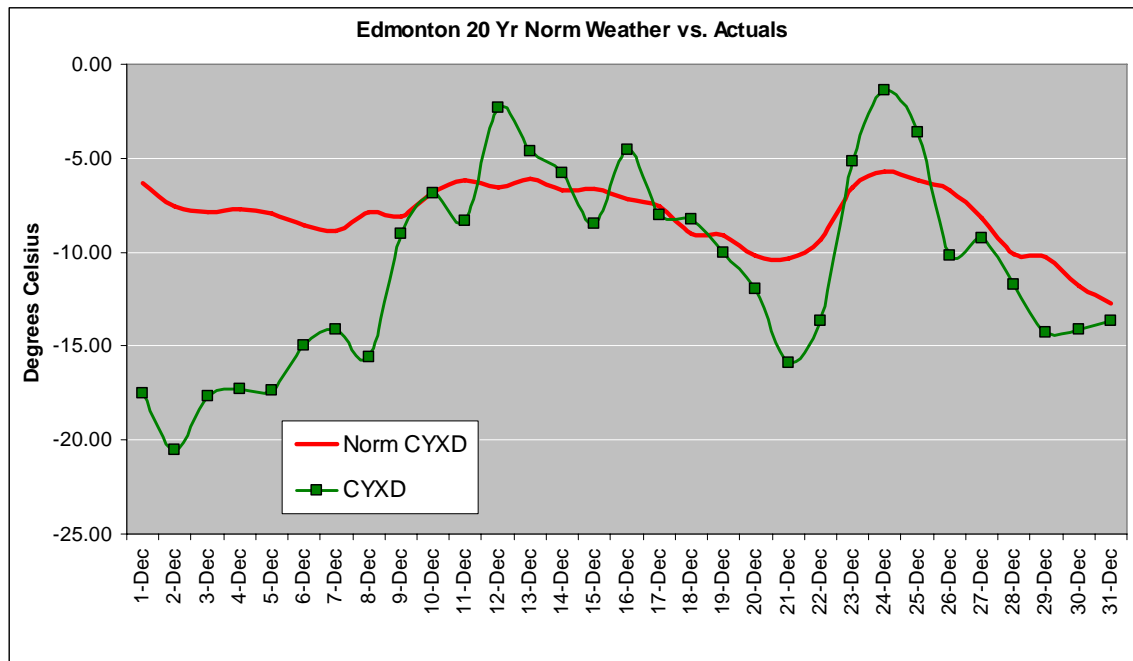


Figure 3 – North Supply Purchases (TJ)

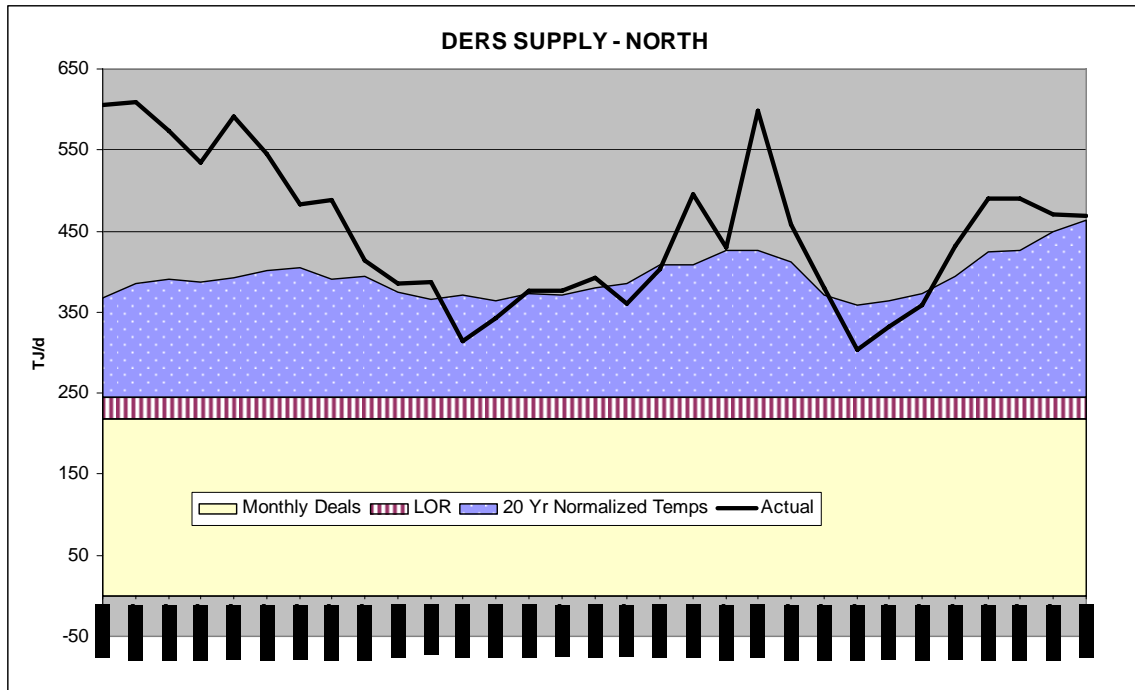
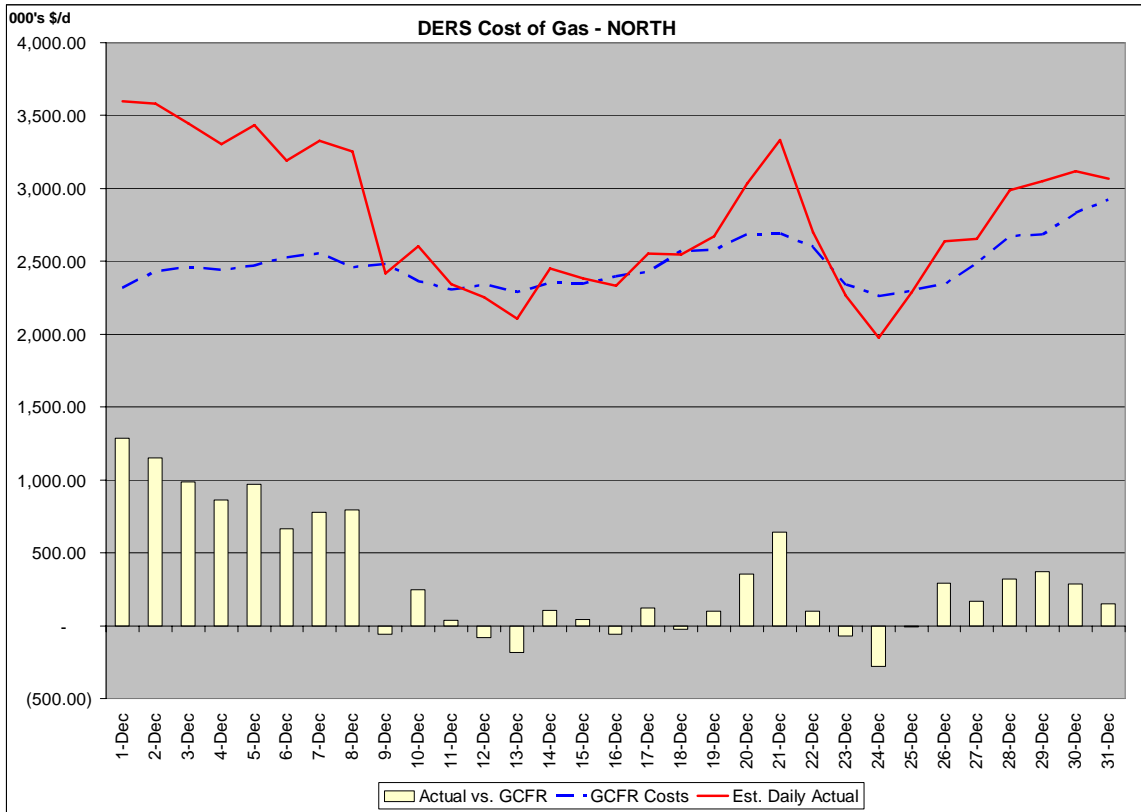


Table 2 – December Purchases (TJ)

December Totals (TJ)		Schedule Reference
Monthly	6,758	
Life of Reserve	856	
20 yr normal	4,518	
Actual	1,285	
Core and LB	403	
Total (February GCFR)	13,820	February GCFR (M-2 column B (Line 1 minus Line 9))
December GCFR	12,254	December GCFR (M-2 column D (line 1))
Difference	1,566	February GCFR line minus December GCFR line

Figure 4 – North Purchases (\$'000)



Please note that the estimated actuals for the current month is a "net" estimate. This number is the sum of current month purchases plus storage minus excess system sales.

Table 3 – December Purchases (\$'000)

December Purchases Total (\$'000)		Schedule References
December GCFR Forecast	\$76,857	December GCFR (M-1 Column E (line 2 minus line 16))
February GCFR Forecast	\$85,713	February GCFR (M-1 Column C (line 2 minus line 16))
Difference	\$8,856	February GCFR line minus December GCFR line

North Calendar Sales (\$'000)

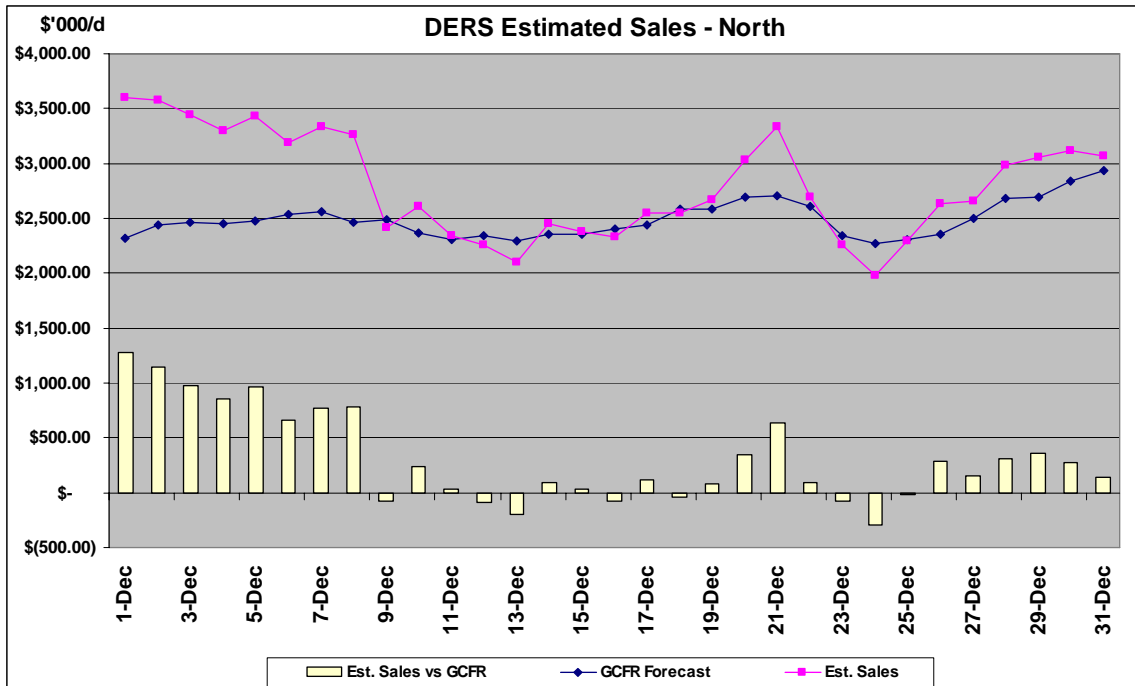


Table 4 – December Sales (\$'000)

December Sales Total (\$'000)		Schedule References
December GCFR Forecast	\$77,183	December GCFR (M-1 Column E (line 14))
February GCFR Forecast	\$80,798	February GCFR (M-1 Column C (line 14))
Difference	\$3,615	February GCFR line minus December GCFR line

The chart below shows the cost of gas and calendar sales for the month of December as reported in the December and February GCFR.

Table 5 – Variance in December and February GCFR for December Calendar Month Purchases and Sales (\$'000)

	December GCFR	February GCFR	Table References
December Sales	\$77,183	\$80,798	Table 4
December Purchases	\$76,857	\$85,713	Table 3
Difference	\$326	(\$4,915)	Sales minus Purchases

Note: The data shown in Figures 1 through 4 have been taken as of January 25th, and represents information available to DERS at the time. Numbers may be slightly off as a result of rounding differences.

January Data

Figure 6 – Daily Price Data

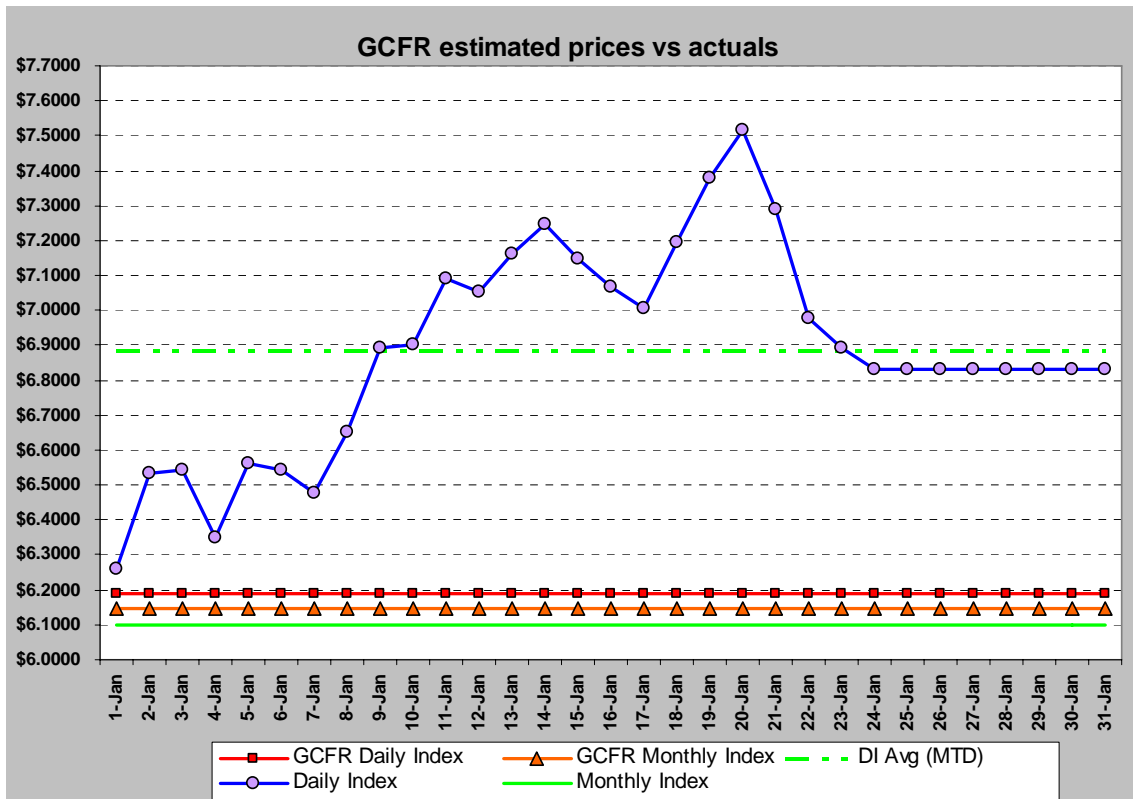


Table 6 – Price Comparison (January)

	January GCFR	Actual	Difference
MI	\$6.1478	\$5.8228	\$0.325
DI Average	\$6.1895	\$5.7241	\$0.465

Figure 6 shows the difference in the actual daily and monthly index prices and the forecast daily and monthly prices that were included in the January GCFR. Figure 7 below shows the actual temperature during the month of January for Edmonton.

Figure 7 – Daily Weather Data Edmonton

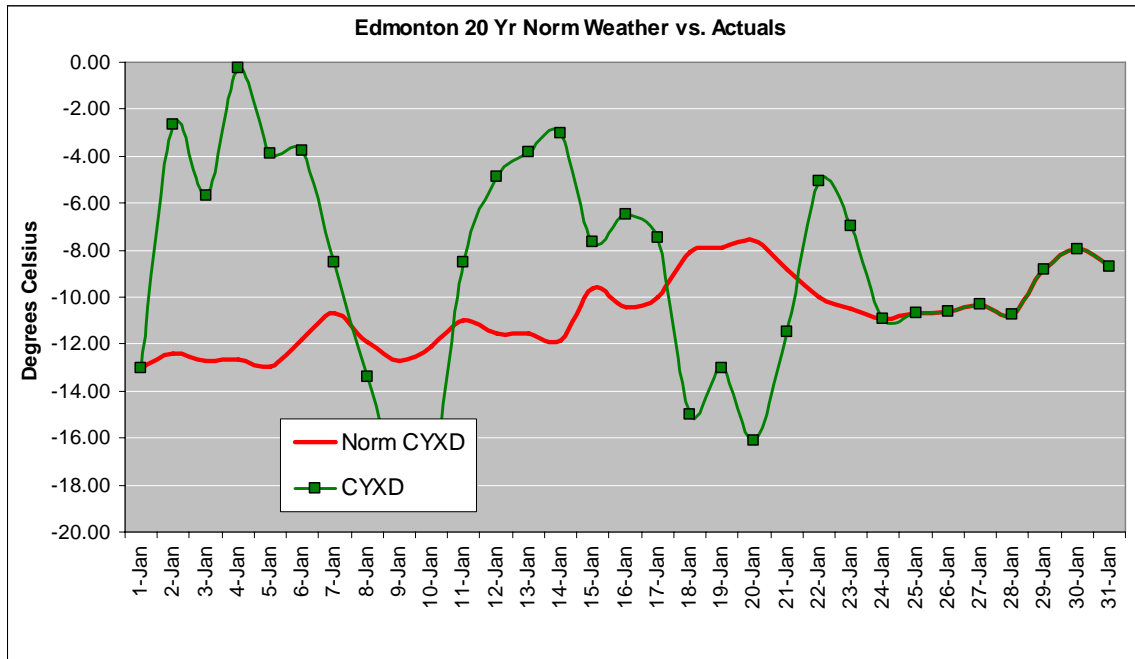


Figure 8 – North Supply Purchases (TJ)

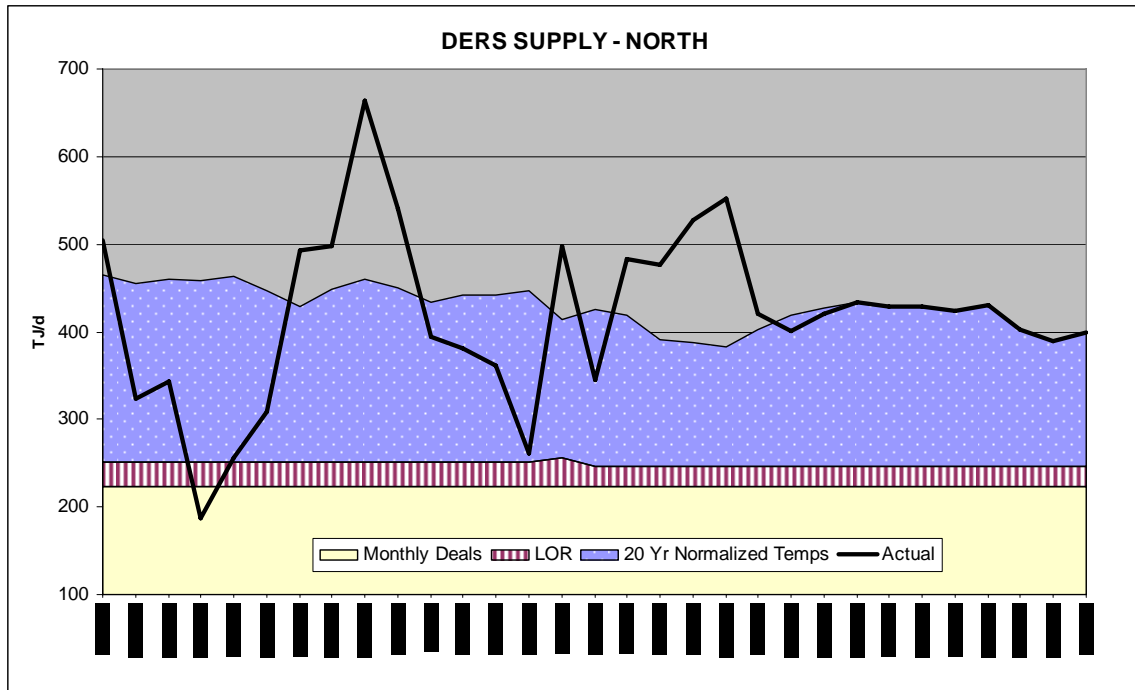
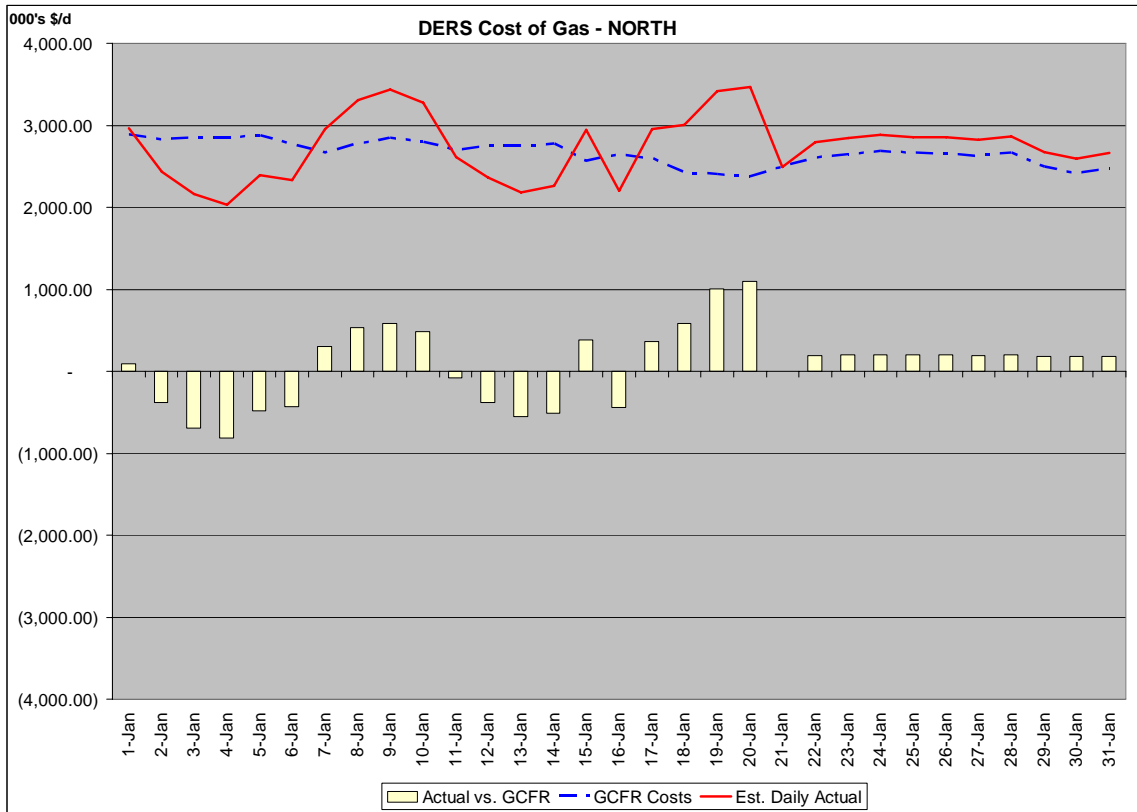


Table 7 – January Purchases (TJ)

January Totals (TJ)		Schedule Reference
Monthly	6,913	
Life of Reserve	798	
20 yr normal	5,691	
Actual	(834)	
LB	500	
Total (February GCFR)	9,326	February GCFR (M-2 column C (Line 1 - Line 9))
January GCFR	13,368	January GCFR (M-2 column D (line 1))
Difference	(\$4,042)	February GCFR line minus January GCFR line

Figure 9 – North Purchases (\$'000)



Please note that the estimated actuals for the current month is a "net" estimate. This number is the sum of current month purchases plus storage minus excess system sales.

Table 8 – January Purchases (\$'000)

January Purchases Total (\$'000)		Schedule References
January GCFR Forecast	\$82,474	January GCFR (M-1 Column E (line 2 minus line 16))
February GCFR Forecast	\$84,856	February GCFR (M-1 Column D (line 2 minus line 16))
Difference	(\$2,382)	January GCFR line minus February GCFR line

Figure 10 - North Calendar Sales (\$'000)

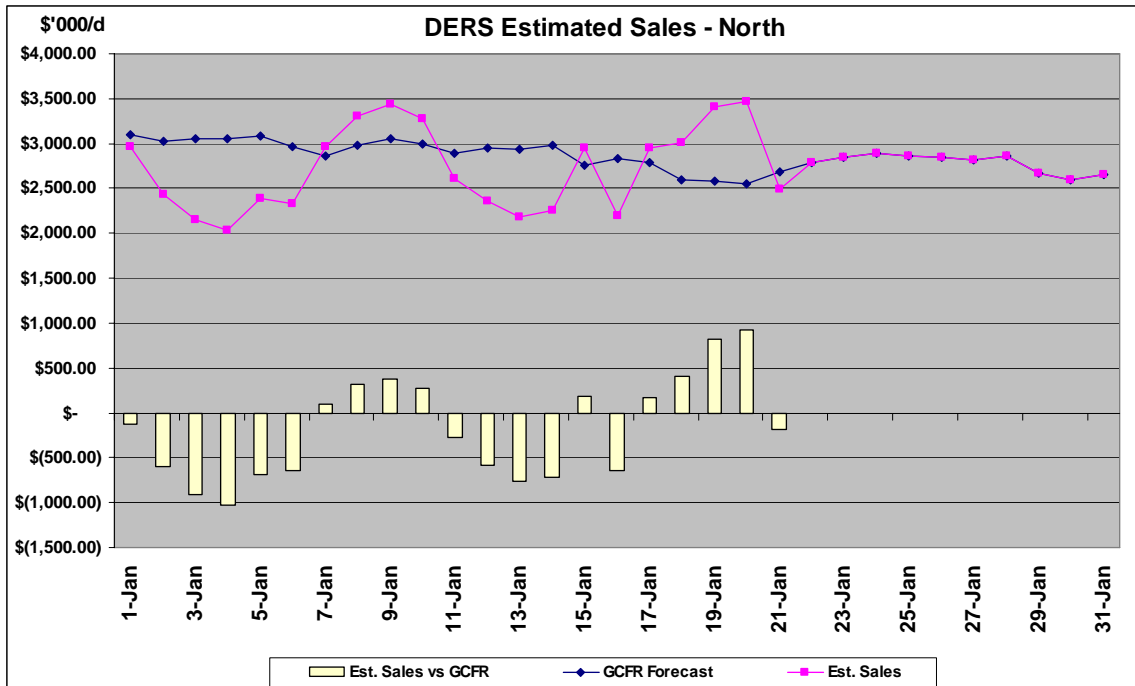


Table 9 –January Sales (\$'000)

January Sales Total (\$'000)		Schedule References
January GCFR Forecast	\$88,590	January GCFR (M-1 Column E (line 14))
February GCFR Forecast	\$86,627	February GCFR (M-1 Column D (line 14))
Difference	\$1,963	January GCFR line minus February GCFR line

The chart below shows the cost of gas and calendar sales for the month of January as reported in the January and February GCFR.

Table 10 – Variance in January and February GCFR for January Calendar Month Purchases and Sales (\$'000)

	January GCFR	February GCFR	Table References
January Sales	\$88,590	\$86,627	Table 9
January Purchases	\$82,474	\$84,856	Table 8
Difference	\$6,016	\$1,771	Sales minus Purchases

Note: The data shown in Figures 6 through 9 have been taken as of January 25th, and represents information available to DERS at the time. Numbers may be slightly off as a result of rounding differences.

Prior Period Adjustments

Sales (Schedule M-1 line 14)

DERS has included \$504,930 as a prior period adjustment relating to calendar sales. This prior period adjustment relates to billing adjustments (cancel/re-bills) for customer billings from the February 2006 through to October 2007 consumption period. Billing adjustments take the form of initial charges, revised charges and the time period in which the adjustment relates to as part of regular monthly reporting. The dollars and volumes for this adjustment are detailed by month below.

	\$	Volumes GJ
Prior to February 2007	\$30,186.64	191.85
February	\$8,483.70	290.63
March	\$7,747.05	480.94
April	(\$275.57)	702.60
May	(\$6,563.07)	31.77
June	(\$41,247.94)	(363.47)
July	\$372,515.76	88.94
August	\$2,740.43	476.02
September	\$4,216.92	923.76
October 2007	\$127,126.55	24829.38
Total Prior Period	<u>\$504,930.47</u>	<u>27652.42</u>

Carrying Costs on Imbalances (Schedule M-1 Column D, Line 5)

As per Decision 2006-030, DERS has included a credit of \$4,455.07 related to carrying costs on ATCO Gas' imbalance account.

Imbalances

DERS has included (\$565) in imbalances which were invoiced from ATCO Gas to DERS related to measurement adjustments from the March 2007 to August 2007 time period as well as \$5,791 related to measurement adjustments from the October 2007 time period.